

The Essential Bonded Phases of UHPLC

Providing smarter chromatography solutions, state-of-the-art analytical software, and products for **all your separation needs**



Temperature Maxima (low pH, 60 °C; mid pH, 40 °C)

MORE POLAR

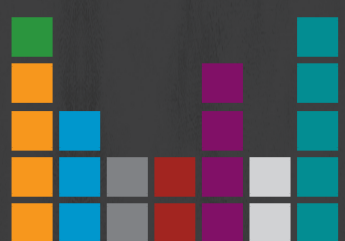
*No difference in retention †=100% Aqueous Compatible ¹Note: ACE SuperC18 can be used from pH 7.5 to pH 11.5 at 40 °C or lower with volatile mobile phase additives

	Bonded Phase	Brand	Phase	Particle Size (µm)	100% Aqueous Compatible	Encapped	Carbon Load (%)	Surface Area (m ² /g)
AMINO	NH ₂	ACE	ACE Ultra-High Performance Bonded Phases	1.7	No	No	4.0	300
	HILIC	HALO	ACE Ultra-High Performance Bonded Phases	2.0	No	NA	N/A	120
HILIC	Penta-HILIC	HALO	ACE Ultra-High Performance Bonded Phases	2.0	No	No	2.8	120
	HILIC-A	ACE	ACE Ultra-High Performance Bonded Phases	1.7	No	No	N/A	300
	HILIC-B	ACE	ACE Ultra-High Performance Bonded Phases	1.7	No	No	4.0	300
	HILIC-N	ACE	ACE Ultra-High Performance Bonded Phases	1.7	No	No	7.0	300
CN	CN	ACE	ACE Ultra-High Performance Bonded Phases	2.0	No	Yes	5.5	300
	ES-CN	HALO	ACE Ultra-High Performance Bonded Phases	2.0	No	Yes	3.4	120
PFP	CN-ES	ACE	ACE Ultra-High Performance Bonded Phases	1.7, 2.0	Yes	Yes	12.6	300
	PFP	HALO	ACE Ultra-High Performance Bonded Phases	2.0	No	Yes	5.3	120
	C18-PFP	ACE	ACE Ultra-High Performance Bonded Phases	1.7, 2.0	Yes	Yes	14.3	300
AQ	AQ	ACE	ACE Ultra-High Performance Bonded Phases [Clear Retention Cores]	2.0	Yes	Yes	14.0	300
	AQ-C18	HALO	ACE Ultra-High Performance Bonded Phases	2.0	Yes	Yes	6.5	120
PHENYL	Phenyl	ACE	ACE Ultra-High Performance Bonded Phases	2.0	No	Yes	9.5	300
	Biphenyl	HALO	ACE Ultra-High Performance Bonded Phases	2.0	Yes	Yes	7.0	135
	Phenyl-Hexyl	HALO	ACE Ultra-High Performance Bonded Phases	2.0	Yes	Yes	6.3	120
POLAR EMBEDDED	C18-AR	ACE	ACE Ultra-High Performance Bonded Phases	1.7, 2.0	Yes	Yes	15.5	300
	RP-Amide	HALO	ACE Ultra-High Performance Bonded Phases	2.0	Yes	Yes	7.3	120
ALKYL	C18-Amide	ACE	ACE Ultra-High Performance Bonded Phases	1.7, 2.0	Yes	Yes	17.0	300
	C4	ACE	ACE Ultra-High Performance Bonded Phases	2.0	No	Yes	5.5	300
	C8	HALO	ACE Ultra-High Performance Bonded Phases	2.0	No	Yes	4.8	120
	C8	ACE	ACE Ultra-High Performance Bonded Phases	2.0	No	Yes	9.0	300
	C18	HALO	ACE Ultra-High Performance Bonded Phases	2.0	No	Yes	7.2	120
	C18	ACE	ACE Ultra-High Performance Bonded Phases	1.7, 2.0	No	Yes	15.5	300
	SuperC18	ACE	ACE Ultra-High Performance Bonded Phases	1.7, 2.0	No	Encapsulated	14.8	400

mac-mod.com



The Essential Bonded Phases of UHPLC



Celebrating the 150th Anniversary of the Periodic Table of Elements

Buy Any Combination of Two 1.7 or 2.0 μm ACE[®] Excel or HALO[®] UHPLC Columns and **Get a FitBit[®] Charge 3 or \$250 MAC-MOD Gift Card**

Use Codes: MMFitbit or MM250GC
Offer Expires September 30, 2019



SHOP NOW:

1 (800) 441-7508 • info@mac-mod.com
mac-mod.com/shop.php

